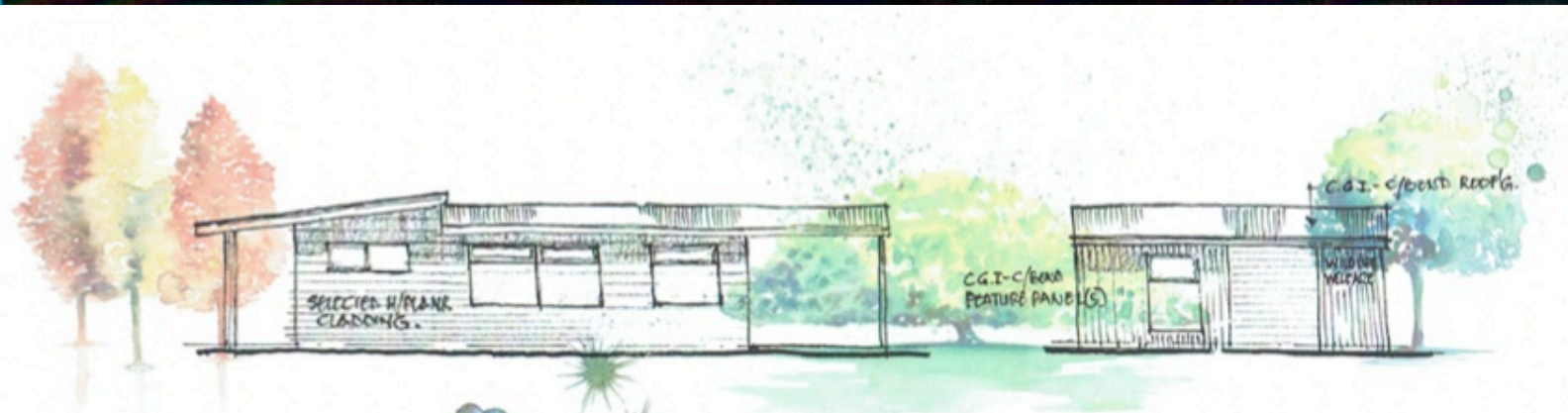




WILDLIFE WELFARE ORGANISATION (SA) INC.



Proposed Wildlife Welfare Org. (SA) Inc.
 Rescue Centre, Kessell Rd, Goolwa.
 Building material palette sympathetic to natural surrounds.
 Slate grey, steel blue, olive tones.
 Hardie plank cladding with custom orb feature wall and screen.
 Corporate identity to feature screen.

WILDLIFE WELFARE ORGANISATION (SA) INC.

Operating funds are required to cover the costs of:

- Specialty foods
- Radiology and medication costs
- Veterinary costs
- Rescue vehicle running costs
- Specialised equipment and aviaries

These costs have been significant this year due to an unprecedented 550 wildlife rescues that have required care.

Escalations in the number of rescues and workloads have required WWO to assess the long term future and sustainability of its service.